

gardi

ZAMEL sp. z o.o.

ul. Zielona 27, 43-200 Pszczyna, Poland  
 Tel. +48 (32) 210 46 65, Fax +48 (32) 210 80 04  
[www.zamel.com](http://www.zamel.com), e-mail: [export@zamel.pl](mailto:export@zamel.pl)

zaMel

## DESCRIPTION

The ZMB-01/C camera is supported by recorders from the ZMB-01 monitoring system manufactured by ZAMEL and will not operate independently.

ZMB-01/C is a 2 MP wireless WI-FI camera which can be used to expand the basic ZMB-01 monitoring system (comprising a recorder and 2 cameras).

A maximum of 9 cameras can be observed on the recorder.

## TECHNICAL DATA

## ZMB-01/C

Power supply:	12 V DC
Power consumption:	1.7 W
Frequency:	2.4 GHz
Matrix type:	2MP (1080p), 1/2.9" CMOS Sensor HISILICON Hi3516C
Infrared:	20 LEDs of ca. 25 m in light range
Housing protection rating:	IP66
Weight:	284 g
Dimensions:	73 x 160 x 160 mm (with the antenna unfolded)



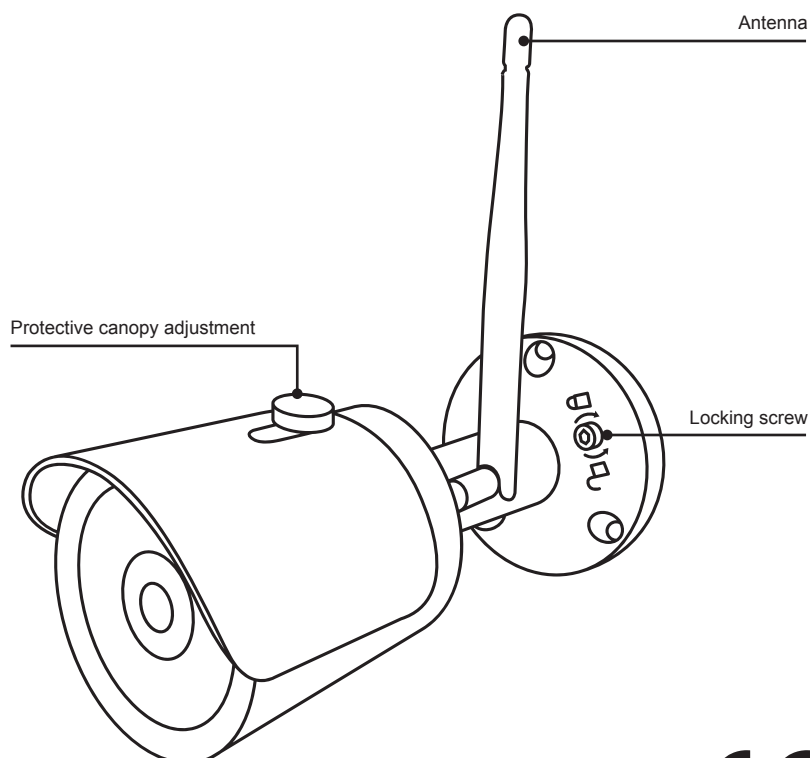
## NOTE

The device should be connected to a one-phase network in accordance with legally binding standards. The connection method is described in this manual. Any activities related to installation, connection, and adjustment should be performed by qualified electricians who have read this user's manual and familiarised themselves with device functions. Removing the enclosure voids the warranty and poses a risk of electric shock. Before installation, make sure that there is no voltage on connection cables. To install the device, use a cross-head screwdriver with a diameter of 3.5 mm. The proper operation of the device is affected by how the device is transported, stored, and used. It is not advisable to install the device in the following cases: lack of any components, damage to or deformation of the device. If the device operates improperly, please contact the manufacturer.



Do not dispose of this device in the trash can with other waste! In order to avoid harmful effects on the environment and human health, store used device in specially designated places. Household electronic waste can be returned for free and in any amount to the collection point established for this purpose, and also to the shop when buying new equipment.

## APPEARANCE



## INSTALLATION AND CONNECTION

- Hang the camera using 3 expansion plugs and screws provided with the system - Fig. 1.
- To adjust the camera angle, loosen the screw at the bottom of the camera using the Allen key provided with the system (Fig. 2). Next, adjust the two dimensions of the camera to set its position at the required angle. After adjusting the camera, tighten the locking screw.
- To connect the camera, plug in the power supply (12 V/500 mA power supply unit). The culverts provided with the system should be used for conducting cables through walls.

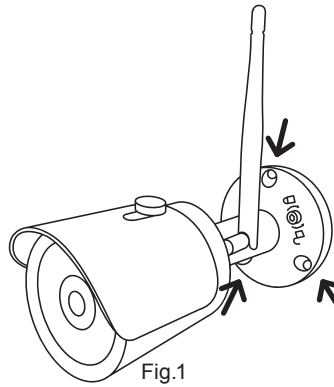


Fig.1

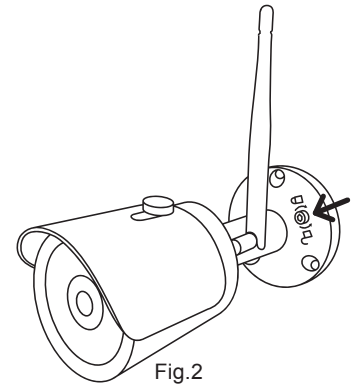


Fig.2

## ADDING THE CAMERA TO THE RECORDER

To pair the camera with the recorder:

- In the main menu of the recorder, select the "Camera" option to open the "Camera management" window" and display the list of cameras installed in the system (Fig. 4).
- Click on the "Wireless code Add" to display the notification in Fig. 5 signaling that the 120 sec. programming procedure was started.
- Find the programming button on the incoming cable connected to the camera. If it is secured with a cap, remove it to gain access to the button (Fig. 6).
- Next, press the programming button for about 6 sec. until 3 LEDs on the camera front start to blink. After a few seconds from releasing the button, the new camera should appear on the list of available devices in the recorder. Use this method to add subsequent cameras (as part of the 120 sec. programming procedure). If all cameras are not programmed in 120 sec., call the programming function from the recorder's menu again.

**9 cameras in total can be programmed for the recorder.**

The remaining settings, i.e. the period, in which the camera is to record image, motion detection settings, etc., should be configured according to the user manual provided with the ZMB-01 monitoring system.

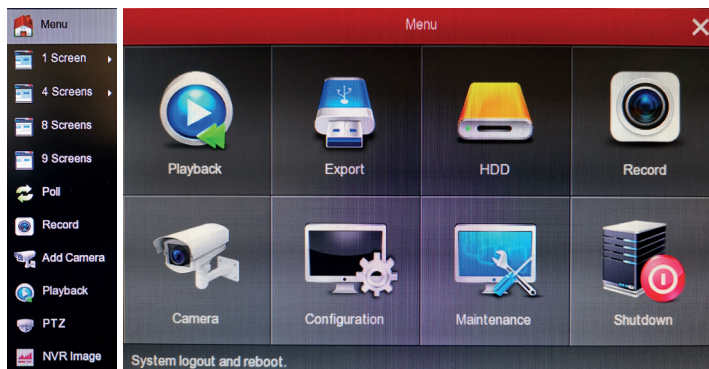


Fig.3

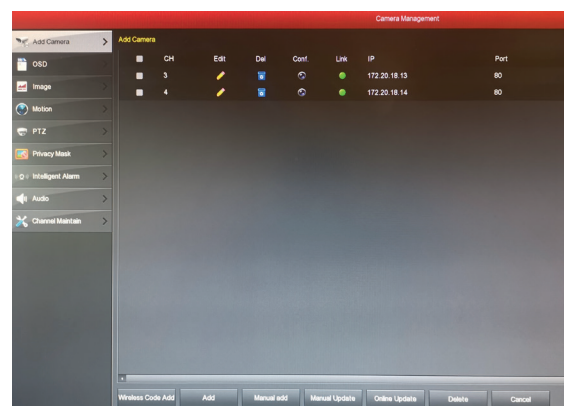


Fig.4

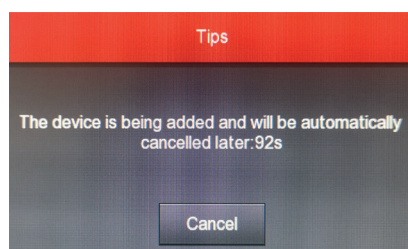


Fig.5

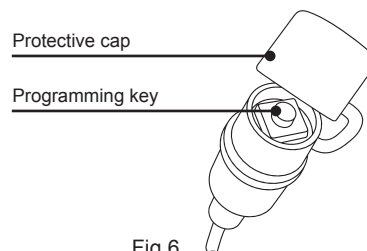


Fig.6

## WARRANTY CARD

There is 24 months guarantee on the product

Salesman stamp and signature, date of sale

1. ZAMEL provides a two-year warranty for its products.
2. The ZAMEL warranty does not cover:
  - a) mechanical defects resulting from transport, loading / unloading or other circumstances;
  - b) defects resulting from incorrect installation or operation of ZAMEL products;
  - c) defects resulting from any changes made by CUSTOMERS or third parties, to products sold or equipment necessary for the correct operation of products sold;
  - d) defects resulting from force majeure or other aleatory events for which ZAMEL is not liable;
  - e) power supply (batteries) to be equipped with a device in the moment of sale (if they appear).
3. All complaints in relation to the warranty must be provided by the CUSTOMER in writing to the retailer after discovering a defect.;
4. ZAMEL will review complaints in accordance with existing regulations.;
5. The way a complaint is settled, e.g. replacement of the product, repair or refund, is left to the discretion of ZAMEL.
6. Guarantee does not exclude, does not limit, nor does it suspend the rights of the PURCHASER resulting from the discrepancy between the goods and the contract.