



ZAMEL Sp. z o.o.

ul. Zielona 27, 43-200 Pszczyna, Poland
Tel. +48 32 210 46 65, Fax +48 32 210 80 04
www.zamel.com, e-mail: export@zamel.pl



DESCRIPTION

The ASM-04 staircase lighting timer controls lamps in corridors and staircases. Once tripped to turn on the lamps, the staircase lighting timer turns them off automatically after a time delay preset by the user. The time delay can be set between 10 seconds to 10 minutes with a potentiometer on the front panel of the staircase lighting timer. The staircase lighting timer features a power limiter to isolate the controlled lamp power line when the power threshold, which can be set between 0.1 and 2 kW, is exceeded.

FEATURES

- Controls time delay to turn staircase lamps off
- Smooth lamp turn-off time delay setting from 10 s to 10 min
- Power threshold setting from 0.1 to 2 kW for overload protection
- Works with single-pole backlit lamp switches
- Forced lamp off override
- Power overload LED indicator
- Function of permanent switching on the lighting
- Single-module enclosure
- For installation on a DIN rail



The device is designed for a single-phase installation and must be installed in accordance with standards valid in a particular country. Installation, connection and control should be carried out by a qualified electrician staff, who act in accordance with the instruction manual and the device functions. In case of casing dismantling, the guarantee is lost and an electric shock may occur. Before installation make sure the connection cables are not under voltage. The cruciform head screwdriver 3,5 mm should be used to install the device. Improper transport, storage, and use of the device influence its wrong functioning. It is not advisable to install the device in the following cases: if any device part is missing or the device is damaged or deformed. In case of improper functioning of the device contact the producer.



Do not dispose of this device with other waste! In order to avoid harmful effects on the environment and human health, the used device should be stored in designated areas. For this purpose, you can dispose of household waste free of charge and in any quantity to a collection point set up, as well as to the shop when you buy new equipment.

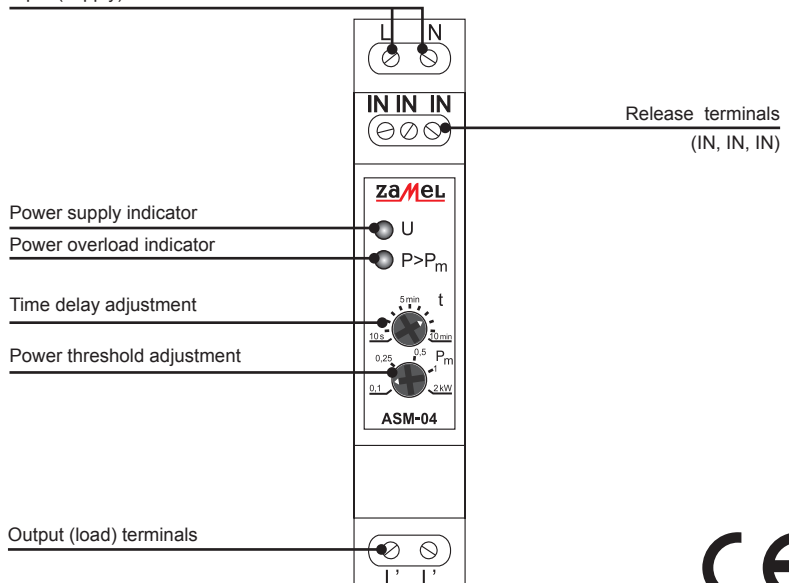
TECHNICAL DATA

ASM-04

Power input terminals:	L; N
Rated supply voltage:	230 V AC
Supply voltage tolerance:	-15 to +10%
Rated mains frequency:	50 / 60 Hz
Rated current load:	26 mA
Release terminals:	IN; IN; IN
Release control current:	0.5 mA
Time delay setting range:	10 s to 10 min (with a rotary potentiometer)
Time delay setting resolution:	±10%
Time delay setting repeatability:	±5%
Power threshold setting:	0.1 to 2 kW
Power threshold trip off delay:	40 s
Power overload indication:	red LED
Transmitter contact ratings:	1NO – 16 A / 250 V AC1 4,000 VA
Wiring terminals:	7
Wiring size:	0,2 ÷ 2,50 mm ²
Operating temperature:	-20 ÷ +45°C
Installation orientation:	any
Installation type:	DIN rail
Protection grade:	IP20
Overvoltage category:	II
Pollution class:	2
Dimensions:	single module 90 x 17,5 x 66 mm
Weight:	0,079 kg

APPEARANCE

Input (supply) terminals

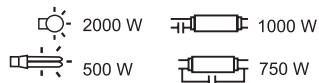


MOUNTING, FUNCTIONING

1. Isolate from power the wiring system to be connected with this product with its circuit breaker, overcurrent device or disconnector, as applicable.
2. Use a suitable tester to verify that the isolated power input wiring is not live.
3. Install the ASM-04 on a DIN Rail in the respective switchboard.
4. Connect the wiring to the terminals, see the applicable wiring connection diagram.
5. Turn on the power of the connected wiring system.
6. Operate the potentiometers to set the desired time delay and power threshold.

The product is ready for use once properly installed and wired. The staircase lighting timer turns on the connected lamp lines for the duration of the time delay setting when tripped to do so with a lamp switch. When the set time delay expires, the lamps are turned off automatically and remain so until the staircase lighting timer is tripped again with a lamp switch. When a power overload occurs in the wired lamp system which exceeds the power threshold setting, the power load terminals are isolated from voltage for 40 s. The staircase lighting timer supports 4-wire power systems. The ASM-04 staircase lighting timer features a blockage: the controlled lamps are turned off after the set time delay even if a lamp switch is locked in the "on" position and function of permanent switching light after pushing 3 times the button (after giving control signal) in a time less than 5 seconds (modul monitoring the power level in installation is permanent active). The staircase lighting timer returns to normal operation when tripped again.

RELAY CAPACITY



PRODUCT FAMILY

The staircase lighting time delay switch ASM-04 belongs to staircase lighting time delay switches ASx family.

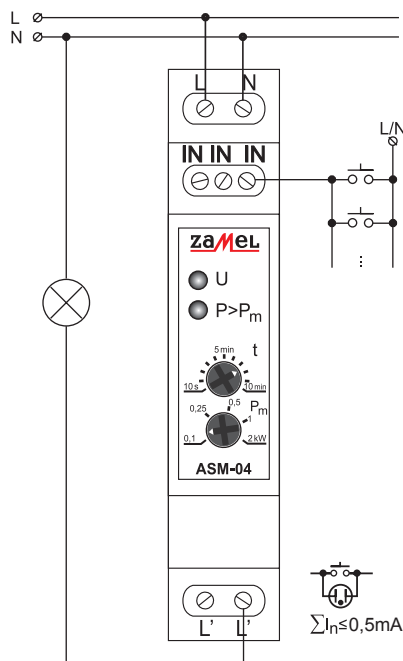
ASx-xx (lx)	Power supply options: 24V - 24 V AC/DC available in ASM-02 U - 12+240 V AC/DC available in ASH-01, ASM-01, ASN-01
	Product version: 01 - Three or four-wire systems 02 - Forced lamp off override 03 - Forced lamp off override and ON/AUTO/OFF control 04 - Forced lamp off override with power threshold limiter 10 - Forced lamp off override, smooth dim-out and trip indication
	Product version: M - modular N - surface-mounted H - water-tight P - for installation in junction boxes
	Product type code

WARRANTY CARD

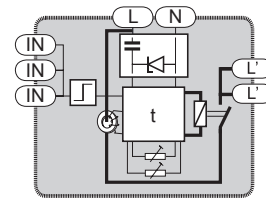
There is 24 months guarantee on the product

Salesman stamp and signature, date of sale

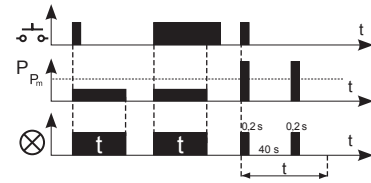
CONNECTION



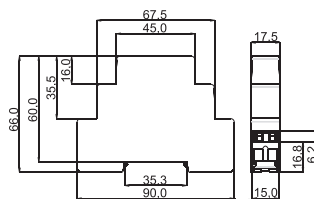
INNER DIAGRAM



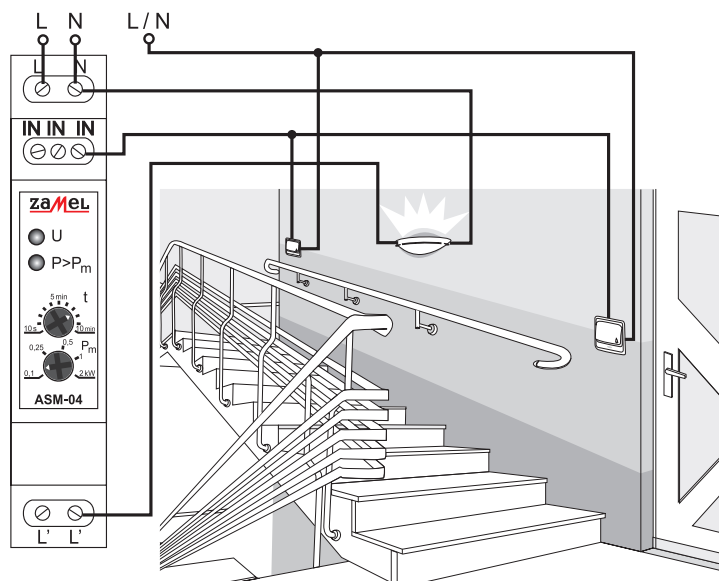
TIME COURSE



DIMENSIONS



APPLICATION



Typical applications:

The staircase lighting timer supports 4-wire power voltage systems. Single-pole switches (also backlit models) can be wired in parallel with this product.

1. ZAMEL provides a two-year warranty for its products.
2. The ZAMEL warranty does not cover:
 - a) mechanical defects resulting from transport, loading / unloading or other circumstances
 - b) defects resulting from incorrect installation or operation of ZAMEL products;
 - c) defects resulting from any changes made by CUSTOMERS or third parties, to products sold or equipment necessary for the correct operation of products sold;
 - d) defects resulting from force majeure or other aleatory events for which ZAMEL is not liable;
 - e) power supply (batteries) to be equipped with a device in the moment of sale (if they appear);
3. All complaints in relation to the warranty must be provided by the CUSTOMER in writing to the retailer after discovering a defect.;
4. ZAMEL will review complaints in accordance with existing regulations.;
5. The way a complaint is settled, e.g. replacement of the product, repair or refund, is left to the discretion of ZAMEL.
6. Guarantee does not exclude, does not limit, nor does it suspend the rights of the PURCHASER resulting from the discrepancy between the goods and the contract.