

ledix

LED lighting fitting NAVI



Recessed installation
in a hole of $\varnothing = 60$ mm



The fitting's protection level
is suitable to be used
outdoor

NAVI is a high quality LED fitting with decorative and application features. It is used for lighting corridors, passageways, for decorative lighting of furniture and lighting arrangement in the interior design.

The features of the fitting:

- IP66 protection level enables mounting outdoor,
- excellent lighting parameters obtained by applying the highest quality LED diodes,
- repeatability of the light colour,
- high lighting output with minimum power consumption,
- high quality and durability estimated to light continuously for five years (~40 000 h).

CAUTION:

- Power supplies of ZNP and ZNN series and of ZNM series in 14 V DC version by Zamel are dedicated to supply the fittings.
- Power supply should be adjusted to the number of powered fittings.
- The fitting with RGB diodes requires an additional, external RGB controller - it is recommended to use Zamel controllers with the following symbols SLR-11, SLR-12 and SLR-13.

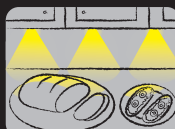
Application:



stairs



corridors, passageways



furniture, decorative
lighting

zameL

14 V DC

LED lighting fitting NAVI

IP66

zameL

Zamel Sp. z o.o.

43-200 Pszczyna, ul. Zielona 27

tel: +48 32 449 15 00

fax: +48 32 449 15 02

+48 32 211 35 55

e-mail: export@zamel.pl, www.zamel.com



14 V DC; IP66
weight: 85 g

Declaration of Conformity
is on www.zamel.com



Do not dispose of this device with other waste. In order to avoid harmful effects on the environment and human health, the used device should be stored in designated areas. For this purpose, you can dispose of household waste free of charge and in any quantity to a collection point set up, as well as to the shop when you buy new equipment.


Made in EU

11-211 GB 29.12.21

TECHNICAL DATA

Supply voltage	14 V DC		
Power consumption	0,56 W – cold white		
	0,58 W – neutral white		
	0,42 W – warm white		
	0,84 W – fitting with RGB LED diodes		
Light colour:	cold white	neutral white	warm white
Colour rendering index R_a	71	77	80
Colour temperature T_c [K]	5900	4200	3100
Luminous flux Φ [lm]	28	28	24
Luminous efficiency [lm/W]	66	48	57

IP66  Protection degree suitable for outdoor use

 The fitting cooperates with photovoltaic cells

4xLED Light source - four LED diodes

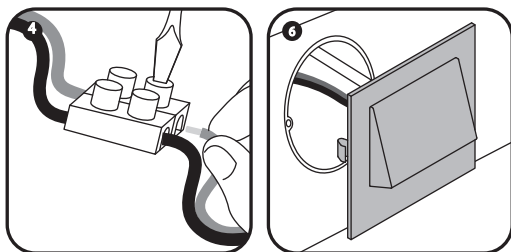
const Built-in LED diode current stabilization system

MOUNTING

Oprawa NAVI przeznaczona jest do montażu w otworze lub puszcze instalacyjnej $\varnothing 60$.

The device is designed for single-phase installation and must be installed in accordance with standards valid in a particular country. Installation, connection and control should be carried out by a qualified electrician staff, who act in accordance with the service manual and the device functions.

1. Disconnect power supply by the phase fuse, the circuit-breaker or the switch-disconnector combined to the proper circuit.
2. Check if there is no voltage on connection cables by means of a special measure equipment.
3. Connect the 14 V DC power supply to 230 V AC.
4. Connect the output cables of the power supply with the fitting wires with proper polarity (red wire of the fitting means „+” power).
5. In case of a fitting with RGB LED diodes the power supply output cables should be connected to corresponding terminals of the RGB controller. The RGB fitting cables with proper sequence should be connected with the RGB controller.
6. Mount the fitting in the opening or in $\varnothing 60$ junction box.
7. Switch on the power supply from the mains.
8. Check if the fitting works properly.



INSTALLATION EXAMPLE

Oprawa NAVI – single colour LED diodes

Figure 1. Fittings connected in a parallel way. The power supply is chosen according to the number of fittings.

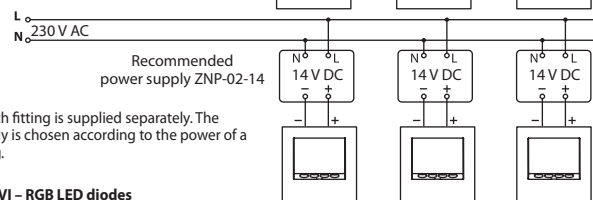
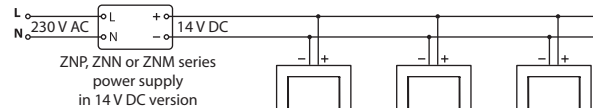


Figure 2. Each fitting is supplied separately. The power supply is chosen according to the power of a single fitting.

Oprawa NAVI – RGB LED diodes

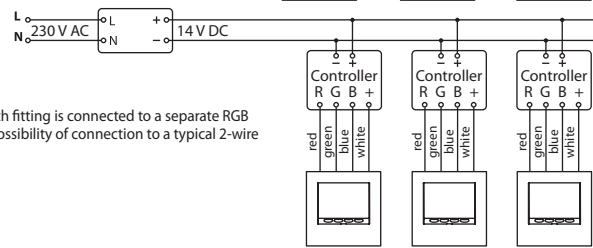


Figure 3. Each fitting is connected to a separate RGB controller. Possibility of connection to a typical 2-wire installation.

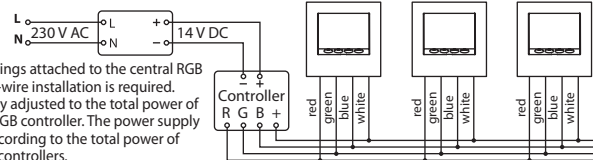


Figure 4. Fittings attached to the central RGB controller. 4-wire installation is required. Power supply adjusted to the total power of fitting and RGB controller. The power supply is chosen according to the total power of fittings and controllers.

CAUTIONS

- 14 V DC power supplies from the Zamel product offer (ZNP, ZNN, ZNM series) should be used to supply the fittings.
- Power supply must be chosen according to the amount of fittings and the way of their installation.
- The light source in fittings is not replaceable - if damaged, replace the entire fitting.
- In case of fittings with standard light colours, the red wire means „+” power.
- Fittings with RGB LED diodes require an additional external RGB controller.
- One central RGB controller can be used for a few fittings (4 - wire installation) or a separate controller for each fitting (2 - wire installation).
- In case of RGB controllers, it is recommended to use the controllers from the Zamel product offer with the following symbols SLR-11, SLR-12, SLR-13.
- The manufacturer is not liable for damage caused by improper installation and use of the product.