

RADIO TRANSMITTERS DELETION

➊ Press PROG push-button of ROP-02 device for a longer time. ➋ After 5 seconds LED red diode switches on (signal pulsates) and then it switches off. ➌ Release the push-button in ROP-02 - MEMORY IS DELETED.

TIME PROGRAMMING

➊ Press PROG push-button of ROP-02 device for a longer time till LED red diode switches on (constant signal). Next release PROG push-button. Wait (for about 5 seconds) till LED red diode switches on (first signal pulsates, next the signal is constant). ➋ Wait again (for about 5 seconds) till LED red diode switches on (first signal pulsates, next the signal is constant).

for CHANNEL 1: ➊ Press PROG push-button of ROP-02 device and then release it. LED red diode switches off and then switches on (signal pulsates). Every LED diode pulse equals 1 second. ➋ After the adjusted time is finished (the number of LED red diode flashes) press PROG push-button and then release it - TIME IS ADDED.

for CHANNEL 2: ➊ Wait again (for about 5 seconds) till LED red diode switches on (first signal pulsates, next the signal is constant). ➋ Press PROG push-button of ROP-02 device and then release it. LED red diode switches off and then switches on (signal pulsates). Every LED diode pulse equals 1 second. ➌ After the adjusted time is finished (the number of LED red diode flashes) press PROG push-button and then release it - TIME IS ADDED.

Maximum time is 18 hours for every channel.

COOPERATION AND OPERATING RANGE

Symbol	ROP-01	ROP-02	ROB-01	SRP-02	SRP-03	RWG-01	RWL-01	ROM-01	ROM-10	RDP-01	RTN-01
RNK-02	180 m	200 m	200 m	200 m	200 m	250 m	180 m	250 m	250 m	180 m	250 m
RNK-04	180 m	200 m	200 m	200 m	200 m	250 m	180 m	250 m	250 m	180 m	250 m
P-256/8	230 m	250 m	250 m	250 m	250 m	300 m	200 m	300 m	300 m	230 m	300 m
P-257/4 (2)	180 m	200 m	200 m	200 m	200 m	250 m	180 m	250 m	250 m	180 m	250 m
RNM-10	230 m	250 m	250 m	250 m	250 m	300 m	200 m	300 m	300 m	230 m	300 m
RNP-01	160 m	180 m	180 m	180 m	180 m	200 m	160 m	200 m	200 m	160 m	200 m
RNP-02	160 m	180 m	180 m	180 m	180 m	200 m	160 m	200 m	200 m	160 m	200 m
RNL-01	160 m	180 m	180 m	lack*	lack*	200 m	160 m	200 m	200 m	160 m	200 m
RTN-01	200 m	200 m	200 m	200 m	200 m	200 m	200 m	250 m	250 m	200 m	250 m
RCR-01	160 m	180 m	180 m	lack*	lack*	200 m	160 m	200 m	200 m	160 m	200 m
RTI-01	160 m	180 m	180 m	180 m	180 m	200 m	160 m	200 m	200 m	160 m	200 m
RXM-01	230 m	250 m	250 m	250 m	250 m	300 m	200 m	300 m	300 m	230 m	300 m

* 1-channel transmitters do not cooperate with roller blind controllers.

CAUTION: The given range concerns open area - an ideal condition without any natural or artificial obstacles. If there are some obstacles between a transmitter and a receiver, it is advisable to decrease the range according to: wood and plaster: from 5 to 20 %, bricks: from 10 to 40 %, reinforced concrete: from 40 to 80 %, metal: from 90 to 100%, glass: from 10 to 20 %, Over- and underground medium and high electrical power lines, radio and television transmitters, GSM transmitters set close to a device system have also a negative influence on the range.

2-CHANNEL WIRELESS CONTROL SET

RZB-04

TECHNICAL DATA

	RNK-04	ROP-02
Input (supply) terminals:	-	L, N
Input rated voltage:	3 V DC (battery CR2032)	230 V AC
Battery life:	3 + 5 years	-
Input voltage tolerance:	-	-15 ± +10 %
Nominal frequency:	-	50 / 60 Hz
Nominal power consumption:	-	0,39 W „stand-by“ mode/ 0,69 W operation mode 1 channel/ 1,09 W operation mode 2 channels
Number of operation modes:	-	5
Number of channels:	4	2
Transmission:	radio 868,32 MHz	
Transmission way:	unidirectional	
Coding:	addressing transmission	
Maximum number of transmitters:	-	32
Range:	up to 250 m in the open air	
Time adjustment:	-	1 s + 18 hours (every second)
Optical signalling:	LED red diode	
Input terminals:	-	IN1, IN2
Transmitter's input (supply) terminals:	-	OUT1, OUT2 - voltage output
Relay contacts parameters:	-	2NO 5A / 250V~ AC1 1250 VA
Number of terminal clamps:	-	6
Section of connecting cables:	-	up to 2,5 mm ²
Ambient temperature range:	-10 ± +55 °C	
Operating position:	free	
Casing mounting:	wall plugs, double-sided adhesive tape	installation cable box Ø60 mm
Casing protection degree:	IP20 (EN 60529)	
Protection level:	III	II
Overvoltage category:	-	II
Pollution degree:	-	2
Surge voltage:	-	1 kV (EN 61000-4-5)
Dimensions:	90 x 80 x 11,5 mm	47,5 x 47,5 x 20 mm
Weight:	0,038 kg	0,039 kg
Reference standard:	PN-ETSI EN 300 220-1, PN-ETSI EN 300 220-2	PN-EN 60669, PN-EN 60950, PN-EN 61000

FUNCTIONING, MOUNTING ROP-02

- ❶ Disconnect power supply by the phase fuse, the circuit-breaker or the switch-disconnector combined to the proper circuit.
- ❷ Check if there is no voltage on connection cables by means of a special measure equipment.
- ❸ Connect the cables with the terminals in accordance with the installing diagram.
- ❹ Install ROP-02 device in installation cable box.
- ❺ Switch on the power supply from the mains.

The device can operate in five modes:

MONOSTABLE the relay operates only while pressing transmitter's push-button.

BISTABLE (one push-button) the device changes relay status cyclically always after pressing the same pushbutton.

SWITCH ON the device switches on after pressing the pushbutton.

SWITCH OFF the device switches off after pressing the pushbutton.

TIME the device switches off according to the adjusted time (tp), but it may be switched off before adjusted time finishes. Default settings - 15 seconds.

CAUTION! Adjusted time cannot be deleted.

FUNCTIONING, MOUNTING RNK-04

By pressing the button, the transmitter sends a signal with 868,32 MHz frequency which controls EXTA FREE receivers. **Device programming procedure (adding a transmitter to a receiver's memory) is described in particular EXTA FREE manual instructions.** The device range (up to 250 m depending on a receiver) can be increased by means of a retransmitter or few RTN-01 retransmitters. The device can be mounted in any place by means of double-sided adhesive tape or wall plugs 5 x (3 x 30) mm. Mounting by means of wall plugs:

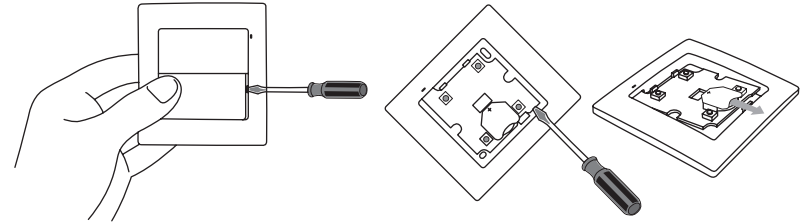
- ❶ Remove push-buttons - to do it press a push-button on one side, and on the other side put a screwdriver into a slot and lift it up.
- ❷ Find a place on the wall to mount the transmitter, make two holes corresponding mounting holes from the transmitter's base.
- ❸ Set wall plugs in the holes.
- ❹ Fix the base by tightening the screws into wall plugs.
- ❺ Place the push-buttons back.

BATTERY CHANGE

Battery discharge status is signalled by several LED red diode flashes during transmission time.

- ❶ Remove push-buttons (Fig. 1).
- ❷ By means of a screwdriver lever up the printedcircuit board releasing the bottom latch (Fig. 2) and remove it from the base.
- ❸ Remove the battery from the latch. (Fig. 3)
- ❹ Mount a new battery. **Watch battery polarisation marked on the latch. Wrong battery mounting may cause device damage.**
- ❺ Put the removed printed-circuit board back in the base.
- ❻ Place the push-buttons back.

CAUTION: While changing the battery, it is suggested to press any of the buttons for about 5 seconds before putting it into a latch. Next press transmission button several times to check its operation. If the transmitter does not work properly repeat the battery change procedure.



RADIO TRANSMITTERS POGRAMMING - CHANNEL 1

MONOSTABLE mode:

❶ Press transmitter's push-button for a longer time. ❷ Press PROG push-button of ROP-02 device for a longer time until LED red diode switches on (constant signal). Next release PROG push-button. ❸ Release transmitter's push-button. LED red diode switches on (first signal pulsates, next the signal is constant). ❹ Press the same transmitter's push-button and release it. LED red diode switches on (the signal pulsates) and next the signal switches off - THE TRANSMITTER IS ADDED.

BISTABLE mode:

❶ Press PROG push-button of ROP-02 device for a longer time until LED red diode switches on (constant signal). Next release PROG push-button. ❷ Press the transmitter's push-button for a longer time. LED red diode switches on (first signal pulsates, next the signal is constant). ❸ Release transmitter's push-button. LED red diode switches on (the signal pulsates), next the LED red diode switches off - it means the TRANSMITTER IS ADDED.

SWITCH ON/SWITCH OFF mode (two push-buttons):

❶ Press PROG push-button of ROP-02 device for a longer time until LED red diode switches on (constant signal). Next release PROG push-button. ❷ Press and release transmitter's pushbutton. LED red diode switches on (first signal pulsates, next the signal is constant). ❸ Press and release the second transmitter's push-button. LED red diode switches on (the signal pulsates) and next it switches off - THE TRANSMITTER IS ADDED.

TIME MODE (one push-button):

❶ Press PROG push-button of ROP-02 device for a longer time till LED red diode switches on (constant signal). Next release PROG push-button. ❷ Press and release transmitter's pushbutton. LED red diode switches on (the signal pulsates, next the signal is constant). ❸ Press and release the same transmitter's push-button. LED red diode switches on (the signal pulsates) and next it switches off - THE TRANSMITTER IS ADDED.

An exemplary programming procedure with the use of P-257/2 remote controller.

The procedure for the rest of radio EXTA FREE transmitters is analogous.

CAUTION: Every transmitter can cooperate with ROP-02 in a different mode, depending on how they were added to the device. One transmitter can be added during one programming cycle. Full memory is signalled with pulsating LED red diode.

RADIO TRANSMITTERS POGRAMMING - CHANNEL 2

❶ Press PROG push-button of ROP-02 device for a longer time till LED red diode switches on (constant signal). Next release PROG push-button. Wait (for about 5 seconds) till LED red diode switches on (first signal pulsates, next the signal is constant). ❷ Choose one out of five ROP-02 operating modes and programme the device in the same way as for channel 1. **CAUTION: For the monostable mode, press the button on the remote before pressing PROG push-button.**