

## DESCRIPTION

Flush roller blind controller SRP-22 is designed to control window roller blinds or other devices driven by 230 V AC one-phase motors. The control can be carried out either wired, by means of transmitters or the EXTA LIFE controller or wirelessly by means of debouncing roller blind push buttons. IN1 and IN2 inputs, configured in a mobile application, are used in the wired type of control. The inputs can operate in a local or central control mode. Single and double roller blind push-buttons can be applied in both cases. Due to the two-way communication between a receiver and a controller, the current roller blind mode is shown in the mobile application by means of a respective icon and a "closing position" parameter. This two-way communication allows for parameterisation of the controller and a remote adding of transmitters (without a physical access to a receiver). Frame encoding algorithm ensures control security, which is particularly important in case of roller blinds and garage gates. SRP-22, apart from the controller, can be simultaneously operated by EXTA LIFE system transmitters. A larger number of transmitters can be added to a receiver which, in turns, enables an independent control from several places. The device is designed for (surface and flush) junction box installation. The receiver has an implemented function of a remote software update by means of the controller. The controller's functionality has been increased by the following functions: programmable roller blind movement time and a possibility to define up to four favourite settings.

## FEATURES

- control of window roller blinds or other devices by means of single-phase 230 V AC motors,
- compatible with a controller and EXTA LIFE system transmitters,
- two-way transmission – current roller blind position indicated in the application (% of closure + icon),
- maximum load: 350 W (2 A) - class AC-3,
- programmable external inputs (local and central control functions),
- connection possibility of a single or double roller blind push-button,
- programmable roller blind movement time,
- 2 programmable "favourite" settings for transmitters and external inputs,
- maximum 4 programmable „favourite" settings selected by means of an application,
- 2 operation modes in cooperation with transmitters (local / central),
- control type selection by means of an application: open – stop – close + roller blind position change by means of a slider,
- software update possibility,
- mounting in Ø60 mm junction box.

## APPEARANCE

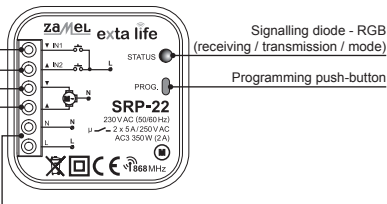
IN1 – roller blind push-button terminal (default setting: downward movement)

IN2 – roller blind push-button terminal (default setting: upward movement)

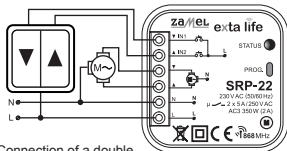
Motor terminals (downward movement)

Motor terminals (upward movement)

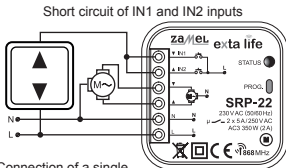
Power supply terminals L, N



## CONNECTION DIAGRAM



Connection of a double roller blind push-button



Connection of a single roller blind push-button

## MOUNTING

The SRP-22 roller blind controller is designed to be mounted in a junction box. Its dimensions enable both flush (Ø60 minimum) and surface mounting. In case of a flush junction box, a deepened box is recommended, as it makes mounting easy with a large number of wiring.

The device is designed for a single-phase installation and must be installed in accordance with standards valid in a particular country. Installation, connection and control should be carried out by a qualified electrician staff, who act in accordance with the service manual and the device functions. For safety reasons, do not mount the device without casing or with a damaged one, as an electric shock may occur.

**CAUTION: Before installation make sure the connection cables are not under voltage. The cruciform head screwdriver 3,5 mm should be used to install the device.**

1. Disconnect power supply by the phase fuse, the circuit-breaker or the switch-disconnector combined to the proper circuit.
2. Check if there is no voltage on the connection cables by means of a special measuring equipment.
3. Connect the device cables with the terminals in accordance with the installing diagram.
4. Install SRP-22 in a junction box.
5. Switch on the power supply from the mains and check if the device operates properly.

In case of control by means of the EXTA LIFE system transmitters, it is necessary to programme transmitters and receivers earlier (see Programming transmitters). In case of driver cooperation with a controller, it is also necessary to pair it earlier (see Driver's registration in the EXTA LIFE system). In case a double push-button switch is connected to the local input, it is ready for an immediate operation.

## MOUNTING REMARKS

1. Do not mount receivers in a close proximity to each other (if there is a possibility, keep a distance of minimum 15 cm between the devices). Particularly, avoid installation of one receiver over the another.
2. The controller cooperates with one-phase 230 V AC motors, limit switches and overload switches. More than one motor must not be connected to a single SRP-22 controller. It is absolutely important to obey the maximum load – 350 W (2 A) for loads in class AC3.

3. It is recommended that the position of a roller blind connected to a controller during installation and programming is in its minimum or maximum position (completely open or closed). Otherwise, just after programming the remote control or pairing the drive with the controller, it is necessary to force the movement of a roller blind to adjust its position to the minimum or maximum (up or down).
  4. It is possible to connect debouncing roller blind push-buttons to IN1 and IN2 inputs in a wired way of control. By default, the controller cooperates with double debouncing roller blind push-buttons. To connect a single push-button, it is necessary to short-circuit IN1 and IN2 inputs or to adjust "Single roller blind push-button" by means of a mobile application as an input type (then it is possible to connect the push-button to the IN1 or IN2 input).
  5. During mounting, make sure the receiver is not exposed to direct water and operation in an increased humidity environment. The mounting ambient temperature range should be within the range from -10 to + 55 °C.
  6. The SRP-22 controller is designed to be mounted indoor. In case the controller is mounted outdoor, it must be placed in an additional hermetic casing.
  7. After the SRP-22 receiver has been installed, it is important to check if it operates correctly. In case of control by means of the EXTA LIFE system transmitters, they must be first programmed with a receiver (see Programming transmitters). In case of cooperation with a controller, a correct pairing of a receiver with a controller is required (see Register of receivers in the EXTA LIFE system). Local inputs in the default setting mode are ready to operate at once.
- 

## FUNCTIONALITY

1. SRP-22 roller blind controller can be simultaneously controlled by:
  - a. EXTA LIFE system transmitters / IN1, IN2 external inputs
    - local control mode,
    - central control mode,
    - activation up to two favourite settings,
    - in case of external inputs, control by means of single and double push-buttons,
  - b. the EXTA LIFE mobile application after pairing with a controller,
    - close / open / stop type of control by means of control push-buttons,
    - % adjustment of roller blind closing position by means of a slide,
    - activation of 4 favourite settings maximum.
2. Current roller blind position is shown in the mobile application (% of closure + icon). The icon indicates only 3 modes: fully opened roller blind, fully closed roller blind, half opened roller blind.
3. It is possible to assign a larger number of push-buttons of EXTA LIFE radio transmitters to one controller – maximum 96 pairs (e.g. 24 transmitters in a local mode).
4. Transmitters' push-buttons can be assigned to the SRP-22 controller by means of the PROG. push-button, or „remotely" by means of the mobile application (without a direct access to a dimmer).
5. Few SRP-22 controllers can cooperate with one transmitter – it enables to group roller blinds (central mode is recommended in this situation) or to control a roller blind independently from different places.
6. A roller blind controller can be paired only with one EXTA LIFE controller (after pairing, it is not visible for other controllers).
7. Push-buttons added to SRP-22 can be selectively deleted.
8. There is a possibility to delete simultaneously all push-buttons added to a controller's memory (reset to default settings).
9. Basic SRP-22 parameters are configured by means of the mobile application.
10. A remote software update of a controller is also possible due to the mobile application (the EXTA LIFE controller must be connected to the Internet).

## OPERATION MODES

### FUNCTIONALITY BY CONTROL OF EXTA LIFE SYSTEM TRANSMITTERS

**CAUTION:** Two push-buttons of a transmitter are always used in case of SRP-22 roller blind controller. For example, P-457/4 remote control (4 push-button) allows for independent control of two SRP-22 receivers (two roller blinds).

Particular push-buttons of radio EXTA LIFE transmitters can be assigned to different operation modes: local and central (see Programming push-buttons of EXTA LIFE radio transmitters).

#### Local control mode

- Local control mode allows to stop a roller blind in any position. It is used to control one roller blind. In this mode, pressing shortly one push-button realises the opening function and pressing shortly the other push-button realises the closing function. In case a roller blind is in motion, pressing any push-button causes the roller blinds stops.
- Roller blind movement time upwards / downwards is in accordance with time adjusted in the controller. The default times are 120 seconds. Longer pressing (>2 sec.) the push-button of a transmitter causes the activation of favourite settings. By favourite settings we understand a defined % of roller blind closure. In case of local control, it is possible to programme only two favourite settings, which are activated independently on current roller blind position.

#### Central control mode

Central control mode allows only for a total opening or closure of a single roller blind or a group of roller blinds. In this mode, it is not possible to stop a roller blind in a desired position. The central mode is used mainly to control a group of roller blinds or to cooperate with sensors. In this mode, pressing shortly one push-button realises the opening function and pressing shortly the other push-button realises the closing function. In case a roller blind is opened, pressing the closing push-button causes the roller blind stops (for about 0,5 sec.) and automatically closes it. The same occurs in case of closing a roller blind. Its movement time either upward or downward is in accordance with time adjusted in the controller. The default times are 120 seconds.

### FUNCTIONALITY BY CONTROL OF IN1, IN2 EXTERNAL INPUTS

#### DOUBLE ROLLER BLIND PUSH-BUTTON

##### Local control

In this mode, pressing shortly (<0,5 sec.) suitable push-buttons connected to IN1, IN2 inputs, activates the following modes: opening, closing or stopping a roller blind. Roller blind movement time is in accordance with time adjusted in the controller (default time is 120 sec.). Pressing the local control push-button for the first time, causes the roller blind moves in a selected direction, however the subsequent push-button pressing stops the roller blind. Longer pressing (>2 sec.) the suitable local control push-button causes the activation of favourite settings. By favourite settings we understand a defined % of roller blind closure. The settings are activated independently of current roller blind position.

**CAUTION:** Favourite settings are common for external outputs and push-buttons of radio transmitters. If the SRP-22 controller is paired with the EXTA LIFE controller, then by means of a mobile application, it is possible to define the roller blind motion by IN1 and IN2 input.

## Central control

In this mode, pressing shortly (<0,5 sec.) suitable push-buttons connected to IN1, IN2 inputs, activates the following modes: opening and closing a roller blind. After the adjusted time is over, the roller blind is stopped. Its default time is 120 sec. In case the roller blind is in motion, but there is a central order (impulse) contrary to its moving direction, then the roller blind is stopped for about 0,5 sec. and it automatically moves in the opposite direction.

**CAUTION: IN1, IN2 input configuration to operate in the central mode is possible only by means of the EXTA LIFE mobile application, but in cooperation with a controller. This application defines the function of IN1 and IN2 input (upward / downward movement of a roller blind).**

## SINGLE ROLLER BLIND PUSH-BUTTON

### Local control

In this mode, pressing shortly (<0,5 sec.) a roller blind push-button activates the following modes: opening, closing or stopping. Roller blind movement time is in accordance with time adjusted in the controller. The default time is 120 seconds. The roller blind movement operates according to a sequence: open – stop - close. Longer pressing (>2 sec.) a push-button causes the activation of programmed favourite settings. By favourite settings we understand a defined % of roller blind closure. A single push-button can activate only one favourite setting (programmed as setting "1").

### Central control

In this mode, pressing shortly (<0,5 sec.) a roller blind push-button, the SRP-22 activates only the following modes: opening and closing. Roller blind movement time is in accordance with time adjusted in the controller. The default time is 120 seconds. The roller blind movement operates according to a sequence: open – stop for about 0,5 sec. – close.

**CAUTION: To connect a single roller blind push-button, configure inputs by means of a mobile application in cooperation with the EXTA LIFE controller. Select the type of input 'single roller blind push-button' and define the input operation mode as 'Local mode' or 'Central mode'. If the input type understood as "Single roller blind push-button" is selected by means of the mobile application, the push-button can be connected to IN1 or IN2 input (their operation is the same). The single push-button can also be connected by a short-circuit of IN1 and IN2 inputs (configuration by means of a mobile application is not required then).**

## FUNCTIONALITY BY MEANS OF EXTA LIFE MOBILE APPLICATION CONTROL

Control of the SRP-22 receiver by means of a mobile application is possible only after it has been paired with the EXTA LIFE controller (see SRP-22 RECEIVER REGISTER (PAIRING) in EXTA LIFE SYSTEM).

After pairing, the controller is visible on the receivers' list in the EXTA LIFE system and can be controlled at once.

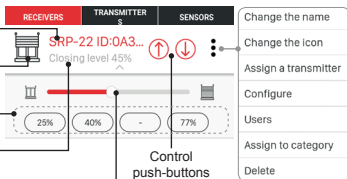
Controller name

Current roller blind position icon

Push-button to define  
4 favourite settings

Current roller blind closing position

Roller blind closing control slide 1 + 99%



- Pressing the "↑" push-button realises the roller blind opening function. During opening, the push-button "↑" is backlit and its opening time is consistent with time configured in a receiver. The backlight of the "↑" push-button is switched off, after the opening time is over.
- Pressing the "↓" push-button realises the roller blind closing function. During closing, the "↓" push-button is backlit and its closing time is consistent with time configured in a receiver. The backlight of the "↓" push-button is switched off, after the opening time is over.
- Pressing the "↑" or the "↓" push-button during opening or closing a roller blind, causes it to be stopped. The backlight of the "..." push-button is switched off after the roller blind is stopped.
- Current roller blind closing position is shown in the mobile application in the form of % value. It is updated after the roller blind is stopped. Additionally, an icon signals the roller blind operation mode. There are only three different icons: fully opened roller blind, fully closed roller blind, half opened roller blind.
- In case of slide control, move it in the right direction to adjust the percentage of roller blind closure. This value is sent to a device just after the slide is released. A roller blind starts moving to the selected position.

**Correct configuration of roller blind motion time (opening / closing) is required, so that the roller blind controller can operate properly by means of the mobile application. The % of roller blind closure is calculated on the basis of these times.**

### Favourite position positions:

- By means of a mobile application, it is possible to set maximum 4 „favourite“ settings, understood as a defined % of roller blind closure for each SRP-22. Favourite push-buttons must be used to activate these settings.
- Initially the settings are not defined. It is signalled by the "-" symbol placed in the push-button.
- To assign a favourite position to a push-button, use a slide to adjust the percentage of roller blind closure and press the selected favourite setting for a longer time. The defined value, after it has been correctly assigned, is displayed in the field.
- Pressing the defined favourite push-button shortly, causes it is backlit and its value, defining the roller blind closure, is sent to a particular controller. The roller blind moves to the required position. The slide moves also to the selected favourite setting. However, changing the slide position, we switch off the favourite setting.
- Favourite settings activated by a mobile application are assigned to a particular controller. Their positions can differ from the ones programmed for radio transmitters and wired inputs in the local mode.
- Favourite settings can be defined only by authorised users (administrator). They cannot be changed and edited by standard users.

## PROGRAMMING EXTA LIFE TRANSMITTERS

- Green "STATUS" LED signals the programming procedure is ongoing.
- Successful completion of a particular operation is signalled by a flashing (several times) orange STATUS LED.

**CAUTION!** In SRP-22 receiver, radio push-buttons which must operate in the local and central mode, are programmed individually. It is possible to assign up to 96 push-buttons to one receiver in subsequent iterations of the programming procedure (for example, 48 pairs in the local mode and 48 pairs in the central mode). It gives a huge flexibility during the programming procedure. A receiver responds only to those push-buttons that a user assigned to this receiver during programming.

- To realise the central mode for some roller blind controllers (simultaneous closing / opening several roller blinds), it is important to programme the transmitter's push-buttons in the central mode to each roller blind controller.
- Push-buttons can be directly assigned to SRP-22 by means of the PROG. button (an access to a receiver is required) or remotely (without an access to a receiver) by means of the EXTA LIFE mobile application.

---

## DIRECT PROGRAMMING BY MEANS OF PROG. PUSH-BUTTON

To assign radio transmitters directly to a receiver, use the receiver's PROG. push-button.

### ASSIGNING PUSH-BUTTONS IN LOCAL MODE

(e.g. 2 push-button remote control P-457/2)

1. Press the PROG. push-button shortly (1sec.) in a receiver – STATUS LED switches on blue.
2. In < 5 sec. press shortly this push-button that should realise the local roller blind opening (for example "1").
3. STATUS LED switches off and switches on blue again.
4. In < 5 sec. press shortly the button that should realize the local roller blind closing (for example "2").
5. The STATUS LED flashes orange to signal the push-buttons have been assigned correctly.

### ASSIGNING PUSH-BUTTONS IN CENTRAL MODE

(e.g. 2 push-button remote control P-457/2)

1. Press the PROG. push-button shortly (1sec.) in a receiver – STATUS LED switches on blue.
2. Wait for about 5 seconds till STATUS LED switches on red.
3. In < 5 sec. press shortly this push-button that should realise the roller blind opening function (for example "1").
4. STATUS LED switches off and switches on red again.
5. In < 5 sec. press shortly the button that should realise the roller blind closing function (for example "2").
6. The STATUS LED flashes orange to signal the push-buttons have been assigned correctly.

# REMOTE TRANSMITTER PROGRAMMING BY MEANS OF EXTA LIFE APPLICATION

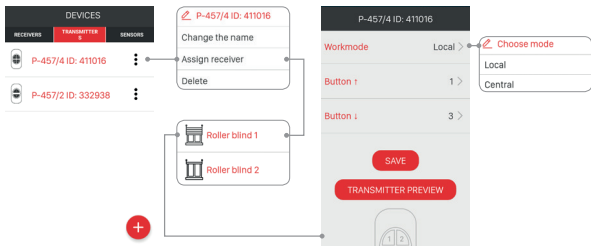
Remote programming allows to add push-buttons of a transmitter to a selected SRP-22 receiver without a physical access to it (without pressing the PROG. push-button on a receiver). It is particularly comfortable, in case receivers are already mounted in a building and access to them is difficult.

Requirements regarding remote programming of transmitters with SRP-22 receiver:

- EXTA LIFE controller must be installed in the system,
- receivers, the transmitter will be remotely assigned to, must be powered and paired with a controller,
- transmitters must be within the controller's operation range,
- transmitters, we want to assign to receivers remotely, must be paired with a controller,
- during one step it is possible to add only one transmitter to one SRP-22 receiver.

**To assign remotely selected push-buttons of a transmitter to the SRP-22 receiver, the following steps are required:**

1. Pair the selected SRP-22 receiver with a controller.
2. Pair the controller with a transmitter, whose buttons you want to assign remotely to a receiver.
3. Choose the "Assign a receiver" option by means of a transmitter.
4. From the list of all paired receivers, choose the SRP-22 receiver to assign the particular transmitter.
5. In the 'Operation mode' field select the mode, in which the transmitter will cooperate with a receiver. In case of SRP-22 the local and central modes are possible.
6. Choose push-buttons of a transmitter that will be assigned remotely to a receiver. It is required to define the push-buttons realising the roller blind opening and closing functions. By pressing the "Transmitter preview" button, the system displays a transmitter with assigned numbers of push-buttons.
7. By pressing the "Save" push-button, a transmitter is remotely programmed in a receiver. As a confirmation, the system displays the following message "Devices have been correctly paired".



It is also possible to assign remotely a transmitter to a receiver by means of a receiver. To do it, choose the "Assign a transmitter" option from the menu of a receiver.



## PROGRAMMING ROLLER BLIND MOTION TIME

In the SRP-22 controller, the default closing and opening time of a roller blind is adjusted to 120 seconds. During standard operation, the closing of a roller blind is realised by means of limit and overload switches built in roller blind drives. The roller blind is also switched off after the adjusted opening / closing time is over.

**CAUTION:** In case of roller blind control by means of a mobile application or during defining favourite settings, a correct opening and closing time programming is absolutely necessary. With reference to these times percentage values are calculated, understood as roller blind closing position. In a real operation, an offset is added to programmed times at a level of 2 seconds to fully realise the function of opening / closing a roller blind and, at the same time, taking into account different drive dynamics. Offset is not considered during percentage value calculation.

The closing and opening times can be programmed in the range from 1 second to 10 minutes. Time configuration can be carried out by means of a receiver (by the PROG. push-button) or remotely by the EXTA LIFE mobile application in cooperation with a controller.

---

## DIRECT PROGRAMMING BY MEANS OF PROG. PUSH-BUTTON

To programme closing and opening time, the following steps are required:

1. Position the roller blind in the topmost position (it must be stopped).
2. Press the PROG. push-button shortly (1sec.) in a receiver – STATUS LED switches on blue.
3. Wait for about 10 seconds till STATUS LED switches off (for the first 5 seconds the LED is blue, and the next 5 seconds it is red).
4. In < 5 sec., since the STATUS LED is switched off, press shortly (1 sec.) the PROG. push-button in a receiver. The roller blind starts closing and its closing time is measured, which is signalled by a flashing STATUS LED blue. Immediately, after a complete roller blind closure, press again shortly (1 sec.) the PROG. push-button. The roller blind starts opening and its opening time is measured, which is signalled by a flashing STATUS LED blue. Immediately, after a complete roller blind opening, press again shortly (1 sec.) the PROG. push-button to finish the programming process of closing / opening times.
5. The STATUS LED flashes orange (several times, quickly) to signal times have been assigned correctly.

# REMOTE TIME PROGRAMMING BY MEANS OF EXTA LIFE APPLICATION

Opening and closing time configuration of a roller blind, which cooperates with the SRP-22 controller is possible by means of a mobile application. To do it, first pair the particular SRP-22 controller with the EXTA LIFE system controller. Next, to configure times, choose the "Configure" option from the receiver's menu. Then, from the configuration screen set basic parameters for the particular controller. Current closing and opening times, read from a particular controller, are shown in the form of "Closing time" and "Opening time" parameters. A user can manually change their values in the range from 1 second to 18 hours.

The image shows a mobile application interface for configuring a roller blind. On the left, a 'DEVICES' menu lists 'Office', 'Roller blind 1', 'Bedroom', and 'RDP-21 Living ro...'. The 'Roller blind 1' device is selected, showing its 'Closing level' at 71%. A 'Configure' option is highlighted. On the right, the 'ROLLER BLIND 1' configuration screen is shown, with fields for 'Mode after power supply is switched on', 'Favourite position 1' (5% and 75%), 'Closing time' (20 s), and 'Opening time' (20 s). Arrows point from the 'Configure' button in the left menu to the 'Configure closing time' and 'Configure opening time' buttons on the right. Labels indicate these buttons are used to 'Push-button to configure closing time' and 'Push-button to configure opening time'. A note at the bottom states: 'Currently adjusted closing/opening times with a possibility to enter manually values from 1 sec. ÷ 10 min.'

## Closing time configuration

To configure the closing time, the following steps are required:

1. Press shortly the "Configure closing time" push-button – it forces the roller blind opens completely.
2. After a complete roller blind opening, press again the "Configure closing time" push-button – it causes the roller blind closes.
3. Immediately after a complete roller blind closure, press again the "Configure closing time" push-button – to finish time programming procedure of a roller blind.
4. Press the "Save" button to save time in a controller.

## Opening time configuration

To configure the opening time, the following steps are required:

1. Press shortly the "Configure opening time" push-button – it forces the roller blind closes completely.
2. After a complete roller blind closure, press again the "Configure opening time" push-button – it causes the roller blind opens.
3. Immediately after a complete roller blind opening, press again the "Configure opening time" push-button – to finish time programming procedure of a roller blind.
4. Press the "Save" button to save time in a controller.

## PROGRAMMING FAVOURITE ROLLER BLIND POSITIONS FOR EXTA LIFE TRANSMITTERS AND IN1, IN2 INPUTS

- For radio transmitters it is possible to programme 2 favourite positions, understood as a percentage value of roller blind closure. The positions are common for all transmitters assigned to a controller in the local mode and IN1, IN2 inputs operating in the local mode. The favourite positions can be activated independently of current roller blind position.
- In order to activate the first favourite position, press longer (>2 sec.) the transmitter's push-button, which realises the roller blind movement upward (a push-button assigned in the local mode) or the push-button connected to the IN1 input.
- In order to activate the second favourite position, press longer (>2 sec.) the transmitter's push-button, which realises the roller blind movement downward (a push-button assigned in the local mode) or the push-button connected to the IN1 input.

**CAUTION: Decalibration may occur, after the activation of favourite settings from indirect roller blind positions. Re-calibration is carried out again automatically, after a complete opening or closing a roller blind.**

---

## DIRECT PROGRAMMING OF FAVOURITE SETTINGS BY MEANS OF PROG. PUSH-BUTTON

Independently of a radio transmitter, favourite settings are always programmed by means of push-buttons 1 and 2.

### CONFIGURATION OF THE FIRST FAVOURITE SETTING

1. Open or close a roller blind completely.
2. Press the PROG. push-button shortly (1sec.) in a receiver –STATUS LED switches on blue.
3. Wait for about 5 seconds till STATUS LED switches on red.
4. Wait another 5 seconds till STATUS LED switches off.
5. Again wait 5 seconds till STATUS LED flashes blue.
6. In < 5 sec. press shortly the PROG. push-button. The roller blind starts moving upward or downward depending on its current position. After the roller blind reaches its position, which will be programmed as the first favourite setting, press push-button "1" of a transmitter or the local push-button connected to IN2 input (by default, the roller blind movement is upward). The roller blind is stopped.
7. The STATUS LED flashes orange quickly (few times) to signal the favourite setting has been assigned correctly.

### CONFIGURATION OF THE SECOND FAVOURITE SETTING

1. Open or close a roller blind completely.
2. Press the PROG. push-button shortly (1sec.) in a receiver –STATUS LED switches on blue.
3. Wait for about 5 seconds till STATUS LED switches on red.
4. Wait another 5 seconds till STATUS LED switches off.
5. Again wait 5 seconds till STATUS LED flashes blue.
6. In < 5 sec. press shortly the PROG. push-button. The roller blind starts moving upward or downward depending on its current position. After the roller blind reaches its position, which will be programmed as the second favourite setting, press push-button "2" of a transmitter or the local push-button connected to IN1 input (by default, the roller blind movement is downward). The roller blind is stopped.
7. The STATUS LED flashes orange quickly (few times) to signal the favourite setting has been assigned correctly.

## FAVOURITE SETTING CHANGE BY MEANS OF EXTA LIFE APPLICATION

Favourite settings for radio transmitters and local inputs can be adjusted by means of the EXTA LIFE application, but after they have been paired with the SRP-22 controller. To do it, choose the "Configure" option from the receiver's menu. There is an immediate change to the configuration screen which allows for setting basic parameters of a particular roller blind controller.

Favourite setting for radio transmitters and local inputs

Configuration field of the first favourite position

Configuration field of the second favourite position

To change the favourite position, click the suitable field to unfold the slide. By means of the slide, set a new value of a favourite position and press the "Save changes" push-button. Next press the "Save" button to save the new configuration in SRP-22.

ROLLER BLIND 1	
Mode after power supply is switched on	Previous mode >
Favourite position 1	5%
Favourite position 1	75%
Closing time	20 s
Configure closing time	
Opening time	20 s
Configure opening time	

---

## DELETING THE WHOLE MEMORY OF SRP-22 (restoring default settings)

After this operation, all push-buttons of transmitters added to the memory of SRP-22 are deleted. Erasing (deleting) the memory includes the receiver is unpaired from the EXTA LIFE controller. Programmed times of a roller blind movement (opening/closing) have a default setting – 120 seconds. Favourite settings assigned to the receiver are deleted.

If a user switched off deliberately pairing with the controller (see Switching off pairing - Broadcast OFF), then deleting the receiver's memory switches on automatically the possibility of pairing (default setting).

In order to delete the whole memory of a receiver, the following steps must be carried out:

1. Press the PROG. push-button for about 5 seconds –STATUS LED switches on orange.
2. After STATUS LED switches off, release the PROG. push-button and in < 5 sec. press it again shortly.
3. The STATUS LED flashes orange to signal the deleting is ongoing. The LED flashes orange quickly to signal the operation has been completed successfully.

## SELECTIVE PUSH-BUTTON DELETION FROM SRP-22 MEMORY

In the EXTA LIFE system receivers, there is a possibility to delete selectively push-buttons from a receiver's memory. It allows to delete selected buttons without deleting the whole memory of a receiver. Push-buttons can be deleted directly (by means of the PROG. push-button) or remotely by means of the EXTA LIFE application.

### DELETING A PAIR OF PUSH-BUTTONS ADDED TO A RECEIVER IN THE LOCAL MODE BY MEANS OF THE PROG PUSH-BUTTON

1. Press the PROG. push-button for about 5 seconds – STATUS LED switches on orange.
2. After STATUS LED switches off, release the PROG. push-button and, in < 5 sec. press one push-button assigned to a receiver in the local mode that will be deleted.
3. The STATUS LED flashes orange (few times) to signal the operation has been completed successfully.

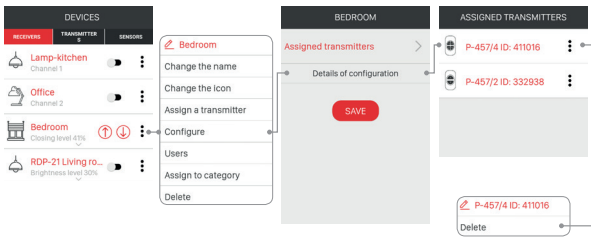
### DELETING A PAIR OF PUSH-BUTTONS ADDED TO A RECEIVER IN THE CENTRAL MODE BY MEANS OF THE PROG PUSH-BUTTON

1. Press the PROG. push-button for about 5 seconds – STATUS LED switches on orange.
2. After STATUS LED switches off, release the PROG. push-button and wait for about 5 seconds till STATUS LED flashes blue. Next, press shortly one push-button assigned to a receiver in the central mode that will be deleted.
3. The STATUS LED flashes orange quickly (few times) to signal the operation has been completed successfully.

### REMOTE DELETION OF TRANSMITTERS BY MEANS OF EXTA LIFE APPLICATION

In case we want to delete remotely push-buttons of a transmitter from a receiver, it is required that the receiver is paired with the EXTA LIFE controller. To do the above, the following steps must be carried out:

1. Choose the "Configure" option from the receiver's menu.
2. Choose "Assigned transmitters" in the configuration menu to display a current list of transmitters added to its memory.
3. Press the transmitter's name to display details included in its memory (numbers of added push-buttons, operation modes, assigned time in time mode)
4. Choose the „Delete" option from the transmitter's menu to delete selected push-buttons from a receiver's memory. A transmitter can also be deleted by sliding the element to the right or left.



# REGISTRATION (PAIRING) SRP-22 IN THE EXTA LIFE SYSTEM

In order to register SRP-22 in the system, it is necessary to connect the EXTA LIFE controller in the system and to install the EXTA LIFE mobile application. The receivers must be connected to 230 V AC. They are remembered in the system only after they have been properly paired with a controller. To do it carry out the following steps:

1. Activate the application and enter the Device screen.
2. Choose the receiver tab and press „+“ ❶ to start the searching process of receivers installed in the system. It lasts no longer than 60 seconds and can be stopped by means of the „Stop“ push-button. All receivers located within the controller are automatically displayed in a list form with a default icon and a default name including the receiver's name (SRP-22) + 6-digit ID serial number ❷ assigned to this receiver.
3. After searching has been completed ❸, press the 'TEST' push-button to quickly locate the receiver (press the TEST push-button alternately so that the roller blind moves up or down). By marking fields next to the 'TEST' push-button ❹, we choose receivers to be paired with the EXTA LIFE controller. It is possible to mark more than one receiver.
4. Press the 'PAIR' push-button to pair the marked receivers. After a while the receivers are registered in the system and are visible on the list in the Receivers tab ❺.
5. After pairing, there is one default icon assigned to the SRP-22 receiver.
6. The receivers, just after pairing, can be controlled at once by means of application buttons. The receiver's mode is signalled by the "Closure level" parameter – given in %. By default, control is carried out in the close – stop – open mode. The roller blind movement time is consistent with time configured in the SRP-22 controller.
7. The receivers can be paired individually – press the "PAIR" push-button and assign a new name to a receiver. In case a larger number of receivers are paired, they are automatically saved with default names.
8. After pairing, it is possible to add an individual name and icon (from the icon base) to each SRP-22 receiver.
9. Only after pairing, the receivers can be used in the system in a further configuration process (assigning a user, a category, building scenes, time and logic functions).

The image displays a sequence of five screenshots from the EXTA LIFE mobile application, illustrating the pairing process for SRP-22 receivers. The screenshots are numbered 1 through 5, corresponding to the steps in the text.

**Screenshot 1:** Shows the 'DEVICES' screen with the 'RECEIVERS' tab selected. A list of receivers is displayed: 'Lamp-kitchen Channel 1', 'Office Channel 2', and 'RDP-21 Living ro...'. A red '+' button is visible at the bottom right.

**Screenshot 2:** Shows the 'PAIRING' screen with a search progress bar and a list of receivers. A red 'STOP' button is visible at the bottom right.

**Screenshot 3:** Shows the 'PAIRING' screen with 'TEST' buttons highlighted in red, indicating selection. A red 'PAIRING' button is visible at the bottom right.

**Screenshot 4:** Shows the 'PAIRING' screen with 'TEST' buttons highlighted in red. A red 'PAIRING' button is visible at the bottom right.

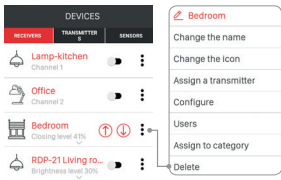
**Screenshot 5:** Shows the 'DEVICES' screen with the 'RECEIVERS' tab selected. The paired SRP-22 receiver is visible with a default icon and name 'SRP-22 ID: 786...'. A red '+' button is visible at the bottom right.

## DELETING (UNPAIRING) SRP-22 FROM EXTA LIFE SYSTEM

Each registered SRP-22 receiver can be deleted from the system. Deleting means 'unpairing' a receiver from a controller. The receiver must be supplied and must be within the controller's operating range.

In order to delete a receiver from the extra life system the following must be carried out:

1. Activate the application and enter the Device screen.
2. Select the receivers tab, next select the "Delete" option from the menu of SRP-22 receiver.
3. After deletion, a receiver is automatically removed from the list of paired receivers.



## SWITCHING ON / SWITCHING OFF PAIRING (BROADCAST OFF)

Switching off pairing (broadcast) is recommended, if the SRP-22 receiver operates in the EXTA LIFE system without a controller (e.g. only with radio transmitters). Switching off pairing causes a receiver is not visible in the search process carried out by means of a controller. The above protects against taking over control of a receiver by unauthorised users. This situation does not take place in case a receiver has been previously paired with a controller. In such a case, it is not visible for other controllers in the search process of receivers. To protect correctly your system, the following steps must be carried out:

1. If there is no controller in the EXTA LIFE system – switch off pairing (Broadcast OFF) in all receivers.
2. If there is a controller in the EXTA LIFE system – pair each receiver with the controller..

Switching off pairing is a reversible process. It means, if the EXTA LIFE controller is installed in the system, pairing function must be switched on, so that receivers can be found in this system.

### SWITCHING OFF PAIRING (BROADCAST OFF)

In order to switch off pairing the following must be carried out:

1. Disconnect power supply from the receiver.
2. Press the PROG. push-button on a receiver.
3. While the PROG. push-button is pressed, switch on power supply.
4. Keep the PROG. push-button pressed for about 5 seconds.
5. When STATUS LED starts flashing orange release the PROG. push-button.
6. After the above steps were carried out, pairing is switched off.

### SWITCHING ON PAIRING (BROADCAST ON)

In order to activate pairing, it is necessary to reset the receiver to default settings (see Deleting the whole memory of a receiver).

**CAUTION:** As a result of the above, all data (push-buttons, times) entered to a receiver's memory are deleted. They must be added again. The easiest way to do it is by means of the extra life mobile application, and just after the extra life controller has been installed.

## IN1, IN2 INPUT FUNCTIONALITY

IN1 and IN2 inputs are used in a wired control of the SRP-22 receiver. They are fully configured by means of the extra life mobile application. The configuration means choosing this type of roller blind push-button that is connected to a controller's input, operation mode of these inputs and roller blind movement after release from the particular input (it refers only to a double roller blind push-button).

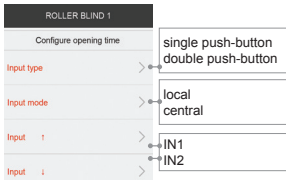
### Default settings:

- Switch type: double roller blind push-button.
- Operation mode: local control.
- IN1 input functionality: roller blind closing.
- IN2 input functionality: roller blind opening.

IN1, IN2 inputs are triggered only from the "L" line. The basic functionality requires giving short (< 0,5 sec.) impulses to these inputs. If the inputs operate in the local mode, then giving a longer phase (> 2 sec.) to an input causes one of the favourite settings is activated (roller blind position). In case of a single push-button, only one favourite setting is activated (programmed as "Favourite\_1"). If inputs are configured to operate with single push-buttons by means of a mobile application, then the push-button can be connected to the IN1 or IN2 input (their operation is the same).

### Input configuration change:

1. Activate the application and enter the Device screen.
2. Select the 'Configure' option from the menu of SRP-22 receiver.
3. Expand the screen and:
  - define the push-button type connected to the IN1 or IN2 input in the 'Input type' field. Choose from 'double roller blind push-button' or 'single roller blind push-button',
  - define the IN1, IN2 input operation mode in the 'Input mode' field. Choose from 'Local mode' or 'Central mode'.
  - if a double roller blind push-button is selected as the input type, then in the next step choose which button should realise the closing function and which button should realise the opening function.
4. Press the 'Save' button to save all settings – the settings are saved in the receiver.

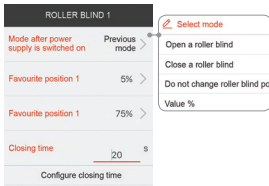


## MODE CONFIGURATION AFTER POWER SUPPLY SWITCH ON

In case of SRP-22 receiver, it is possible to configure its input operation mode after power supply has been switched on. As a default setting, the roller blind does not change its position.

### Possible modes after power supply is switched on:

- open a roller blind / close a roller blind / do not change roller blind position,
- percentage value – after power supply is switched on, a roller blind is in a position consistent with a defined percentage value, understood as a roller blind closure position.



**CAUTION!** If there is power supply failure during a roller blind movement, then after power supply is switched on again press the button to move the roller blind to the top or to the bottom.