

ledix

RGB Control kit SLR-11P



The SLR-11P kit consists of a wireless SLR-11 controller and P-260 touch remote control. The kit is designed to cooperate with RGB products such as RGB LEDIX series standard lighting fittings and 10÷14 V DC RGB strips and modules. When connected with RGB products it enables to set the lighting colour in a fluent way by means of a touch remote control P-260 and to change the luminous flux intensity of a chosen lighting colour. Additionally, SLR-11P realizes the automatic (fluent/strobe way) colour change with a possibility of storing the programme with the chosen colour in the controller's memory. It is also possible to adjust the white colour temperature by means of a touch pad. The remote control included in the kit is added to SLR-11 controller by means of default settings. After mounting the kit, it is ready to use. The possibility of adding different P-260 controllers and chosen EXTA FREE system transmitters is an additional advantage of the set. In this way the users are not limited to only one transmitter as it usually happens in the competitive solutions. The small controller's dimensions allow for its easy mounting in a Ø60 junction box.

Functions:

- switching on / switching off,
- white colour temperature adjustment,
- lighting colour fluent choice by means of a touch pad (RAINBOW),
- floating (FLOATING) and strobe (STROBE) functions,
- automatic colour change with time adjustment,
- luminous flux intensity change (brightening / dimming).

Colour table defined in the controller (STROBE mode)



CAUTION

- While connecting the RGB products to SLR-11 controller, the maximum output load should not be exceeded. If there is a need to increase the controller's output load, then an additional RGB amplifier circuit should be used (WLN-01 or WLP-01).

Detailed mounting and programming instruction is inside the packaging.

zaMEL cet

Cet Lighting Sp. z o.o.


43-200 Pszczyna, ul. Zielona 27
tel: +48 32 449 15 00, fax: +48 32 449 15 02
e-mail: ledix@ledix.pl, www.ledix.pl

P-260
4,5 V (3 x AAA); IP20
weight: 100 g

SLR-11
10 ÷ 14 V DC / 0,22 W; IP20
weight: 27 g



CET Lighting Sp. z o.o. declares that the device complies with the essential requirements and other relevant provisions of the RTTE Directive.

 The symbol means selective collecting of electrical and electronic equipment. It is forbidden to put the used equipment together with other waste.



Declaration of Conformity is on www.ledix.pl



SLR-11P GB Ver. 01

zaMEL cet

10 ÷ 14 VDC

RGB Control kit SLR-11P

ledix

Touch remote control P-260

Wireless RGB controller SLR-11

www.ledix.pl

DESCRIPTION

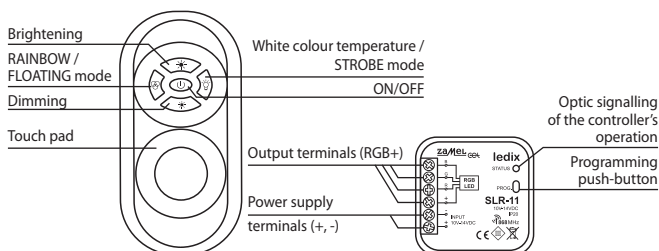
The SLR-11P kit consists of a wireless SLR-11 controller and P-260 touch remote control. The kit is designed to cooperate with RGB products such as RGB LEDIX series standard lighting fittings and 10÷14 V DC RGB strips and modules. When connected with RGB products it enables to set the lighting colour in a fluent way by means of a touch remote control P-260 and to change the luminous flux intensity of a chosen lighting colour. Additionally, SLR-11P realizes the automatic (fluent / strobe way) colour change with a possibility of storing the programme with the chosen colour in the controller's memory. It is also possible to adjust the white colour temperature by means of a touch pad. The remote control included in the kit is added to SLR-11 controller by means of default settings. After mounting the kit, it is ready to use. The possibility of adding different P-260 controllers and chosen EXTA FREE system transmitters is an additional advantage of the set. In this way the users are not limited to only one transmitter as it usually happens in the competitive solutions. The small controller's dimensions allow for its easy mounting in a Ø60 junction box. Functions:

- switching on / switching off,
- white colour temperature adjustment,
- lighting colour fluent choice by means of a touch pad (RAINBOW),
- floating (FLOATING) and strobe (STROBE) functions,
- automatic colour change with time adjustment,
- luminous flux intensity change (brightening / dimming).

TECHNICAL DATA

	P-260	SLR-11
Power supply voltage:	4,5 V DC (3x AAA)	10 ÷ 14 V DC
Nominal power consumption:	-	0,22 W
Number of channels:	-	3 x PWM 9-bit
Maximum channel capacity:	-	2,5 A
Controlling signal:	-	PWM 9-bit
Functions:	Switch on/switch off, Brightening/dimming, Choose colour from the table (RAINBOW), White colour temperature adjustment	
Programmes:	Automatic fluent colour change (FLOATING), Automatic strobe colour change (STROBE)	
STEPS (FLOATING and STROBE)	10 (to 50 min.)	
Control:	-	chosen EXTA FREE transmitters or P-260
Transmission:	Radio 868,32 MHz	
Transmission way:	Unidirectional without confirmation	
Coding:	Yes - addressing transmission	
Maximum number of transmitters:	-	32
Operation range:	Up to 230 m in the open area	
Ambient temperature range:	-10 ÷ +55 °C	
Casing protection degree:	IP20	
Protection level:	III	
Dimensions:	113 x 55 x 21 mm	47,5 x 47,5 x 20 mm
Weight:	100 g	27 g
Reference standard:	PN-ETSI EN 300 220-1 PN-ETSI EN 300 220-2 ETSI EN 301 489-1,3	PN-EN 60669PN-EN 61000

APPEARANCE



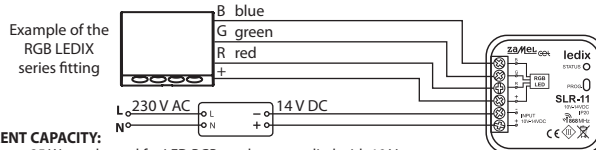
OPERATION TABLE

Symbol	RNK-02	RNK-04	P-256/8	P-257/2	P-257/4	RNM-10	RNP-01	RNP-02	RNL-01	RTN-01	RCR-01	RTI-01	RXM-01	P-260
SLR-11	180	180	230	180	180	230	160	160	-	200	-	160	230	200

The given range concerns open area - an ideal condition without any natural or artificial obstacles. If there are some obstacles between a transmitter and a receiver, it is advisable to decrease the range according to: bricks: from 10 to 40%, wood and plaster: from 5 to 20%, reinforced concrete: from 40 to 80%, metal: from 90 to 100%, glass: from 10 to 20%. Over- and underground medium and high electrical power lines, radio and television transmitters, GSM transmitters set close to a device system have also a negative influence on the range.

DIAGRAM

CAUTION! Nominal output voltage of the power supply (10÷14V DC) and its nominal output power must be adjusted to LED light source connected with the controller.



CURRENT CAPACITY:

- Maximum 25 W per channel for LED RGB products supplied with 10 V
- Maximum 30 W per channel for LED RGB products supplied with 12 V
- Maximum 35 W per channel for LED RGB products supplied with 14 V

FUNCTIONING

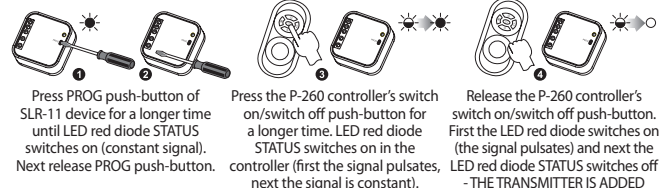
Switching on suitable functions/programmes is carried out by pressing suitable push-buttons of the P-260 remote control:

- **ON/OFF** - switching on/ switching off.
- **Brightening/dimming** - pressing this push-button, the function carries out the fluent change of the luminous flux intensity. This function is available in FLOATING and STROBE modes.
- **FLOATING** - activation/deactivation of the programme for automatic and fluent colour change.
- **STROBE** - activation/deactivation of the programme for automatic and step by step colour change.
- **TOUCH PAD** - allows the colour selection in a fluent way.

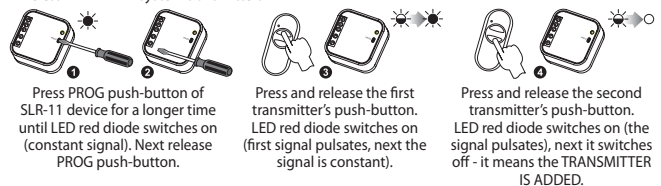
If the active mode is the FLOATING or STROBE mode then the following pressing of the push-buttons described as FLOATING, STROBE carries out the speed change (steps 1 to 10) in this mode. Each change of the step is signalized by flashing of the load which is connected to the controller's output. The transition between step 10 and 1 is signalized by a repeated flashing of the load. The step 1 means that the colour change is the fastest (the whole cycle takes about 120 s), step 10 means that the colour change is the slowest (the whole cycle takes about 50 minutes).

TRANSMITTERS' PROGRAMMING

P-260 touch remote control



Wireless EXTA FREE system transmitters



An exemplary programming procedure with the use of P-257/2 remote control. The procedure for the rest of radio EXTA FREE transmitters is analogous.

CAUTION: 32 different transmitters can be added to a single SLR-11 controller. In case of adding more than 32 transmitters, STATUS diode will flash a few times while adding them.

TRANSMITTERS DELETION



MOUNTING

CAUTION! The device is designed for single-phase installation and must be installed in accordance with standards valid in a particular country. Installation, connection and control should be carried out by a qualified electrician staff, who act in accordance with the service manual and the device functions.

1. Disconnect power supply by the phase fuse, the circuit-breaker or the switch - disconnector combined to the proper circuit.
2. Check if there is no voltage on connection cables by means of a special measure equipment.
3. Connect the power supply to 230 V AC.
4. Connect the cables to the appropriate controller terminals in accordance with the connection diagram.
5. Mount the controller in the Ø60 junction box.
6. Switch on the power supply from the mains.
7. Add selected transmitters to the controller (a description is in TRANSMITTERS' PROGRAMMING section) and check their proper functioning.